



# INNERVIEW

*Newsletter of The Inner Temple*

*Trinity 2023*

## New Silks



[facebook.com/TheInnerTemple](https://facebook.com/TheInnerTemple)



[twitter.com/@TheInnerTemple](https://twitter.com/@TheInnerTemple)

# A Blip in the Life of an Inn of Court

**A**stonishingly, it is just over five years since I took over as Sub-Treasurer of The Inner Temple – on 12 March 2018, to be exact. Time has (mostly) flown past. But I have yet to spend a ‘normal’ year in this role. So far, my experience has been:

- 2018** working up to the vote on Project Pegasus.
- 2019** decanting ourselves out of the Treasury Building into temporary accommodation.
- 2020** the pandemic was at its height, while work on Project Pegasus continued.
- 2021** preparation to reoccupy the Treasury Building, which proved abortive due to a design fault.
- 2022** actual reoccupation of the Treasury Building and business resumes.
- 2023** discussions on the project financing continue, hopefully to be concluded this year...

But a year has now passed since the splendid re-opening of the Treasury Building by Master Her Royal Highness The Princess Royal, and we have a full annual cycle of very successful social/networking and educational/training events to look back on with considerable satisfaction. (This includes hosting our first cohort of the high quality Inns of Court College of Advocacy Bar Course.) Teething troubles have been relatively minor, and our new facilities are being well used and justify all the hard work put into creating them. In early 2019, the Treasury Building was looking tired, and systems were starting to fail – now it looks fabulous, and everything is working well (with the odd glitch, which is to be expected). Hopefully, it will keep us going for at least the next 100 years.

There have been some sadnesses during the past five years, with the loss of friends who did much for the Inn. My predecessor Patrick Maddams, whose wise advice did much to prepare me for my role, had been keen to have a

photograph taken of the two of us with his predecessor Brigadier Peter Little. Sadly Peter, who is also remembered with much affection here, died in early 2018 before this idea could be realised. And just a few weeks ago we held the memorial service for Patrick, whose untimely death in 2022 at least allowed him to see the Treasury Building reopened – he cared deeply about Project Pegasus and had done much to pave the way to its realisation. The Inn is partly about physical infrastructure, but much more than this it is about its members and staff. We have been glad to see so many members and friends passing through the Treasury Building in the past year. The large numbers of people enjoying lunch in Hall suggests a partial move back towards pre-pandemic working patterns.

For me, as the leader of a team of excellent and loyal staff, it has been an interesting experience to have a new line manager every year – as new Treasurers start their year of office every 1 January. This brings a degree of freshness and even excitement to our work! The role of Treasurer has become busier over time – not just chairing committees, attending social and educational events, and travelling abroad; but also ruling on conduct and discipline cases, exercising some financial oversight and acting as a point of contact with a growing number of organisations that want to engage with us. I think it fair to say that new Readers-Elect are surprised by quite how much is demanded of them even before they become Treasurers. The practice



With the late Master Patrick Maddams, former Sub-Treasurer





of all three Principal Officers (Treasurer, Reader, and Reader-Elect) meeting at least once a week with the Sub-Treasurer helps to familiarise them with the task ahead and brings a degree of consistency to policy-making which may not always have been there in the past but is now essential.

We also have some fabulous new staff in place since I first arrived – among them a Director of Education, a Librarian, a Head Gardener (just weeks after I arrived) and (for the first time ever for The Inner Temple) a Human Resources Manager. There has also been a huge amount of change in the Searcys catering team and in the Education and Training Department (primarily growth in numbers).

The objectives of our workload as staff have not changed dramatically, but even in my five years, the volume and complexity of the work we do has increased markedly

and, I suggest the level of professionalism we bring – and need to bring – to our work has similarly expanded. A significant number of staff have relevant professional qualifications or experience which they bring to bear, and training for staff on matters as various as working at height, unconscious bias, or mental first aid is no longer an optional extra but is essential as we strive to deliver on the Inn’s agreed values of being dedicated, excellent, progressive, friendly, and hospitable. Cross-cutting issues - such as equality, diversity, and inclusivity, wellbeing or sustainability - are automatically considered before we adopt a new policy or approach.

What lies ahead? The Temple Church Restoration & Renewal Project for one. But I look forward to a year of near normality in 2024!

Greg Dorey, Sub-Treasurer

# Contents

Announcements	4
Recent Events	5
Inner Temple Summer Party	8
Social Context of the Law	9
Education & Training	10
Temple Big Picnic	15
Garden	16
Library	18
Temple Church	20
History Society Lecture	21
Staff News	23
Temple Music	24
Diary	26

## INNERVIEW

**Editors:**  
Henrietta Amodio,  
Kate Peters and  
Sandra Alvarez

## Announcements

For our full list of judicial appointments, please go to [innertemple.org.uk/appointments](https://innertemple.org.uk/appointments)

Master Barbara Mills (Barbara Mills KC) has been elected as Vice Chair of the Bar Council for 2024, becoming the first specialist family practitioner for 35 years and the first Black person to assume the role.



# InnStore



## CHOCOLATES

£5

In person  
Treasury Office  
Online

[innertemple.org.uk/store](https://innertemple.org.uk/store)



Recent Events



Northern Circuit Dinner  
in Manchester

28 April

Benchers’  
Night

4 May





# Recent Events



## Coronation Evensong and Reception

10 May

The Inner Temple and Middle Temple jointly celebrated the Coronation of Their Majesties King Charles III and Queen Camilla at a special Choral Evensong and reception.





## Western Circuit Dinner in Bristol

12 May



## Social Context of the Law

Should our Constitution Protect  
Against Party Elected Leaders?

10 May



Our thanks to Sir John Curtice FRSA FRSE FBA and The Rt Hon Sir David Lidington KCB CBE and to Master David Hunt for moderating such lively and engaging discussion.

Available to watch  
[innertemple.org.uk/  
constitution](https://innertemple.org.uk/constitution)

## Dinner to New Silks

24 May





THURSDAY 13 JULY 6PM – 9.30PM

# THE INNER TEMPLE SUMMER PARTY

**COST:**

Members & Guests  
£55.65 each

Members Under 5 year's Call  
and Inner Temple Students  
£41.60

**BOOK:**

[innertemple.org.uk/summerparty](http://innertemple.org.uk/summerparty)

**ENQUIRIES:**

[members@innertemple.org.uk](mailto:members@innertemple.org.uk)  
020 7797 8250







# Social Context of the Law

MONDAY 12 JUNE 2023

## Is Our Adversarial System Fit for Purpose?

### Speakers:

**Tracy Ayling KC**

2 BR and Inner Temple Benchers

**The Rt Hon Lord Bonython LLD**

Former Senator of the College of Justice and judge of the  
Supreme Courts of Scotland and Inner Temple Benchers

**David Perry KC**

6KBW College Hill

### Moderator:

**Sir Geoffrey Nice KC**

Gresham Professor of Law 2012-2016, co-founder Geoffrey  
Nice Foundation 2014 and Inner Temple Benchers

---

## TO BOOK

[innertemple.org.uk/adversarial](http://innertemple.org.uk/adversarial)

### COST

In-person £11.75

Online: £7

### ENQUIRIES

[members@innertemple.org.uk](mailto:members@innertemple.org.uk)

020 7797 8250

1 Qualifying Session  
Equivalent to 1hr CPD

### WHERE

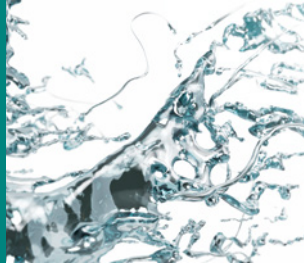
In-person and livestreamed from The Inner Temple

### WHEN

Lecture: 6pm – 7.30pm

Reception: 7.30pm – 8pm

## Education & Training



# The Inner Temple Online Equality, Diversity, and Inclusivity (EDI) Training Course

The Inn's Executive Committee agreed in 2021 that all those who have a role in the Inn's governance, as well as the Inn's educational and outreach work, will need to have undertaken a recognised course of training on equality, diversity, and inclusion.

To support this goal, an online EDI training course contextualised to the work of the Inn was created specifically for its members and was launched in 2022.

You will have been sent an invitation to complete the training if you have signed up to volunteer to support Education & Training activities, are an Inn-accredited advocacy trainer, or if you are a member of the one of the following committees: The emails will come from University College London at the following address: [extend@ucl.ac.uk](mailto:extend@ucl.ac.uk) Please keep an eye out for this in your inboxes.

- **Bar Liaison Committee**
- **EDI Sub-Committee**
- **Education and Training Committee**
- **Executive Committee**
- **Library Committee**

We encourage those who have been enrolled onto the training to complete it as soon as possible. If you have encountered any issues with accessing or completing the course, please contact [education@innertemple.org.uk](mailto:education@innertemple.org.uk).

Finally, some words from Master Leslie Thomas on the importance of the rollout of this training and the benefits it will bring to individual members and the Inn as a whole:

“At The Inner Temple, we recognise that fostering equity, diversity, and inclusion is not only a moral imperative but also crucial for our continued success and relevance as an institution. Our EDI course serves as a

pivotal initiative that allows us to actively address and dismantle barriers, cultivate a more inclusive culture, and champion equality within our community.

By participating in the EDI course, our members and those who volunteer for Inn activities can expect to gain valuable insights, tools, and strategies to foster an inclusive environment in their professional and personal lives. The course provides a comprehensive understanding of the diverse perspectives and experiences that shape our society, equipping participants with the skills to engage in meaningful dialogue, challenge biases, and promote fairness and respect.

By embracing diversity and promoting inclusion, our members will develop stronger relationships, forge new connections, and benefit from a broader range of perspectives, ultimately enriching their own personal growth and professional development.

Moreover, The Inner Temple as a whole stands to gain numerous benefits from the EDI course. We will be fostering a more inclusive and supportive environment, where every member feels valued and has an equal opportunity to thrive. This, in turn, strengthens our community, increases engagement, and allows us to better serve our diverse membership, the wider legal profession and the general public.”

**Professor Leslie Thomas KC** – Master of the Bench and Chair of the Equality, Diversity and Inclusivity Sub-Committee



## 2023 Bar Course Awards

### **PETER TAYLOR SCHOLARSHIP**

Bartek Wyrzyszczewski

### **STEPHEN CHAPMAN AWARD**

Alasdair Johnston

### **PRINCESS ROYAL (5 Awarded)**

Rachel Lane, Maud Millar, Lydia Pepper, Ilona Roberts, Alisha Somani

### **MAJOR SCHOLARSHIPS (20 Awarded)**

Marc Alner, Ruari Clark, Bethany Currie, Nisha Joshi, Leo Kirby, Georgina Kuponiyi, Caitlin McLachlan, Katherine McLean, Serena Norman Thomas, Helena Nugent, Roisin Putti, Anna-Marie Robertson, William Robinson, Param Sharda, Betty Shuttleworth, Charlotte Tosti, Ilinca Tuvene, Jesler Francesca van Houdt, Satyam Verma, Henriette Willberg

This year, the Inn received 387 applications for the Bar Course awards and, after allowing for withdrawals, interviewed 337 candidates over two Saturdays in March. We have awarded 131 scholarships and exhibitions, to a total of £1,465,442.00.

For the full list of 2023 Bar Course Award winners [innertemple.org.uk/awardwinners](https://www.innertemple.org.uk/awardwinners)

## Money Laundering

Each year, the Inn hosts three residential weekend Qualifying Sessions for its Bar Course students. The weekends serve to provide the students with the opportunity to meet senior members of the Inn, to develop their advocacy skills in a relaxed and informal atmosphere, and to hear from high profile experts in a niche area of law.

The third of this year's weekends was held in May and was the first of its type to be held at the Inner Temple, rather than at a residential venue in Cheshire or Windsor. Although this decision was made in response to the coronation, it afforded us a unique opportunity to test the Inn's new facilities over the course of a whole training weekend. The weekend in question concerned the topic of Money Laundering and was organised by

Master Robin Sellers. The 52 students and 14 barristers and judges in attendance were presented with a wealth of knowledge on many areas of financial crime, hearing from speakers and trainers from several areas and levels of seniority. On the Saturday afternoon, students were treated to a diverse panel including HHJ Michael Hopmeier, Master Sellers, Catherine Collins, and Jennifer Newcomb, having first been introduced to the topic via Jonathan Fisher KC's fascinating Friday night key note speech.

The weekend was a great success, and we would like to thank all the students who attended as well as our barrister and judicial members who taught that weekend. In particular, we would like to thank Master Robin Sellers for organising the event.

## Burlesque Barristers!

### The Inner Temple Drama Society Performs Victorian Plays

**Tiffany-Rochelle Louis-Byfield**

The Inner Temple Drama Society performed two burlesques in Temple Church Courtyard written during the Victorian era on Monday 22 May and Tuesday 23 May 2023. The English burlesque tradition related to, and in part derived out of, traditional English pantomimes and was particularly popular in London theatres between the 1830s and the 1890s. Both plays were directed by student member, Paul Goddard, with the assistance of Blue Gabriel DeBell and Charlotte McDonald as stagehands. The cast consisted of student members of the Inn and members recently called to the Bar.

#### **Rosencrantz and Guildenstern: A Tragic Episode by W.S. Gilbert**

Ammo Khanna as King Claudius  
Colleen Cumbers as Queen Gertrude  
Ferdinand Holley as Rosencrantz  
Kateryna Cutler as Guildenstern  
Charlotte-Jane Buck as Ophelia  
Nicole Terry as Hamlet  
Susana Cunha as Players



#### **The Cup of Cold Poison, A Burlesque by Andrew Halliday**

Nicole Terry as Mercutio/Nurse  
Ferdinand Holley as Tybalt/Shakespeare  
Susana Cunha as Paris  
Kateryna Cutler as Apothecary  
Colleen Cumbers as Romeo  
Ammo Khanna as Lady Capulet/Friar Lawrence/Attendant 2  
Charlotte-Jane Buck as Juliet/Attendant 1  
Natasha Waller as Queen Mab

If you missed out and want to see the Drama Society's next performance, their next stop will be the Edinburgh Fringe Festival between 17 - 19 August 2023. Tickets can be booked **HERE**.

More details about the performance will be added to the site and advertised in due course.

They will also be performing their annual pantomime on Wednesday 6 December and Thursday 7 December at the Inn, so keep the date in your diary!

## Contacts

DIRECTOR			
<b>Gail Fleming</b>	Director of Education	<a href="mailto:gffleming@innertemple.org.uk">gffleming@innertemple.org.uk</a>	020 7797 8214
OUTREACH AND SCHOLARSHIPS			
<b>Stephanie Baughen</b>	Widening Access Manager	<a href="mailto:sbaughen@innertemple.org.uk">sbaughen@innertemple.org.uk</a>	020 7797 8262
<b>Jess Brown</b>	Outreach Co-ordinator	<a href="mailto:jbrown@innertemple.org.uk">jbrown@innertemple.org.uk</a>	020 7797 8240
<b>Edwina Koroma</b>	Access and Support Officer	<a href="mailto:ekoroma@innertemple.org.uk">ekoroma@innertemple.org.uk</a>	020 7797 8213
<b>Georgina Everatt</b>	Scholarships Manager	<a href="mailto:geveratt@innertemple.org.uk">geveratt@innertemple.org.uk</a>	020 7797 8211
<b>Shahzadi Hussain</b>	Pegasus Trust Co-ordinator	<a href="mailto:shussain@innertemple.org.uk">shussain@innertemple.org.uk</a>	020 7797 8210
PRE-PUPILLAGE			
<b>Julia Armfield</b>	Education Programmes Manager (Pre-Pupillage)	<a href="mailto:jarmfield@innertemple.org.uk">jarmfield@innertemple.org.uk</a>	020 7797 8207
<b>Kerry Upham</b>	Regional Education Officer	<a href="mailto:kupham@innertemple.org.uk">kupham@innertemple.org.uk</a>	020 7797 8189
PUPILS AND PRACTITIONERS			
<b>Vanessa Bennett</b>	Programmes Manager (Pupils and New Practitioners)	<a href="mailto:vbennett@innertemple.org.uk">vbennett@innertemple.org.uk</a>	020 7797 8261
<b>David Miller</b>	Education Programmes Manager (Established Practitioners)	<a href="mailto:dmiller@innertemple.org.uk">dmiller@innertemple.org.uk</a>	020 7797 8209
<b>Mercy Quaynor</b>	Education Co-ordinator	<a href="mailto:mquaynor@innertemple.org.uk">mquaynor@innertemple.org.uk</a>	020 7797 8253
OPERATIONS, CALL TO THE BAR AND STUDENT SOCIETIES			
<b>Richard Loveridge</b>	Education Operations and Project Manager	<a href="mailto:rloveridge@innertemple.org.uk">rloveridge@innertemple.org.uk</a>	020 7797 8212
<b>Tiffany-Rochelle Louis-Byfield</b>	Education Engagement Co-ordinator	<a href="mailto:tlouis-byfield@innertemple.org.uk">tlouis-byfield@innertemple.org.uk</a>	020 7797 8257
<b>Chintan Makwana</b>	Education and Training Administrator	<a href="mailto:cmakwana@innertemple.org.uk">cmakwana@innertemple.org.uk</a>	020 7438 2386

SAVE THE DATE

Inner Temple

Revels Present:

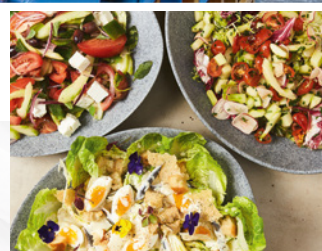


D I A L  
M E D I C I N E  
F O R  
M U R D E R

16 October

BOOKINGS  
FROM SEPTEMBER





## Elevate your lunch break

Step into The Inner Temple Hall and savour our lunch menu.

Fuel up with our fresh and vibrant salad bar or indulge in a traditional roast dinner and other mouthwatering hot dishes. Make Thursdays your curry cravings day or join us on Fridays for our chip shop specials!

Monday – Friday 12.30pm – 2.00pm  
[innertemplevenuehire.co.uk/Menus](http://innertemplevenuehire.co.uk/Menus)

# InnStore

**NOTEBOOK  
& PEN**  
**£16**

**In person**

Treasury office

**Online**

[innertemple.org.uk/store](http://innertemple.org.uk/store)





# Temple Big Picnic

SUNDAY 2 JULY 2023  
12.30PM – 3.30PM

Members of the Inns, their families and friends are invited to come and enjoy our garden and hospitality. Includes barbecue, music, bouncy castle, face painters and entertainment.

Adult: £30.50 Child (2-15yrs) £15.15

[innertemple.org.uk/bigpicnic](http://innertemple.org.uk/bigpicnic)





# My Nature Journal

Christine Bouet-Battisti

It may look like a bee, but it is a member of the Diptera family – a fly!

Photo © Christine Bouet-Battisti

A late summer day spent walking in the garden is something to behold. I have vivid memories of mornings edging the High Border paths and being awestruck by the planting scale and diversity. I couldn't help noticing the many birds that swooped from shrub to shrub and the myriad pollinators hovering around the blooms. I remember thinking what a haven the garden was for both humans and animals. That thought is what inspired me to start a nature journal to record the wildlife of the Inner Temple Garden. I was also motivated by the worrying collapse of insect populations and decided to learn about, and raise awareness for, the species of the site.

## More than Bees!

I would like to shed a special light on the many underappreciated insect pollinators. Honeybees often get the lion's share of headlines in the press, but I think it is crucial to understand the importance of

nature's many other pollinators. According to the Wildlife Trust, between 85% and 95% of the UK's insect-pollinated crops rely on wild pollinators, which obviously does not include honeybees since they are farmed. Pollinators have evolved over

The lovely and appropriately named hairy-footed flower bees (*Anthophora plumipes*) foraging in our wildflowers in March. Male on left, female on right.



Photo © Christine Bouet-Battisti

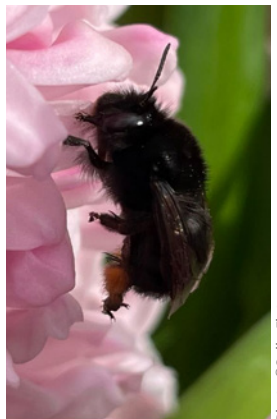


Photo © Sally Flatman



millions of years with plants, adapting their behaviour and physiology to gather and collect pollen and nectar. Some pollinators are generalists, adapting to various plant species, whilst some pollinators are specialists and forage on only a small group of specific flowers. In London, the well-meant introduction of beehives on a large scale is putting a strain on the population of wild pollinators as they outnumber them and compete so efficiently for floral resources. There are 277 bee species in the UK, honeybees being just one of them. By preserving and creating foraging and nesting habitats, we can assist in their protection.

## Moths

Another unappreciated group of pollinators is moths. A moth trap provided by the London Wildlife Trust and GiGL as a citizen science project helped open the fascinating world of moths to me. Moths are the poor relative of the butterfly, often seen as an annoying pest. A recent study by the University of Sussex has found that moths are more efficient pollinators at night than day-flying pollinators (namely bees). As can be seen from the pictures; their diversity is extraordinary. Did you know that there are just 57 resident butterflies' species in the UK compared to 2,500 moth species? I hope you warm up to these captivating creatures!



Common plume moth – (*Emmeline monodactyla*) and Jersey tiger moth (*Euplagia quadripunctaria*), Angle shades moth (*Phlogophora meticulosa*).

## Sources:

- 85%-95% of UK insect pollinated crops depend on wild pollinators  
<https://www.wildlifetrusts.org/savingbees>
- 277 bee species in the UK  
Journal of pollinating ecology – Article: The importance of soil and vegetation characteristics for establishing ground nesting bee aggregations – Konstantinos Tsiolis – 17/10/2022

- A recent study by the University of Sussex has found that moths are more efficient pollinators at night than day-flying pollinators (namely bees)  
<https://student.sussex.ac.uk/news/article/60568-moths-are-more-efficient-pollinators-than-bees-shows-new-research>  
<https://journals.plos.org/plosone/article?id=10.1371/journal.pone.0281810#sec007>

- 2500 moth species in the UK  
<https://butterfly-conservation.org/moths>
- 57 resident butterfly species in the UK  
<https://butterfly-conservation.org/butterflies>
- More than 100 cultivated crops are pollinated by flies including apples, strawberries, and cocoa  
<https://www.nhm.ac.uk/discover/compelling-case-why-flies-are-fabulous.html>

Photo © Christine Bouet-Battisti



Hornet hoverfly (*Volucella zonaria*) and celery fly (*Euleia heraclei*)

## Flies

I could not write about pollinators without mentioning flies. More than 100 cultivated crops are pollinated by flies including apples, strawberries, and cocoa! Flies provide many more unsuspected ecological services, but I would like to make the case for their beauty and their inherent right to live.

Of course, there are many more underappreciated but important pollinators such as wasps and beetles, for instance, that also deserve to be recognised.

Last year, the Garden was lucky enough to be part of the Pollinating London Together (PLT) survey, which gathered data on the diversity of pollinators and pollinator-friendly plants in the City of London. We are extremely grateful to PLT for providing us with an important insight into our pollinators'

populations as we thrive to improve the Garden's biodiversity. In the light of the worldwide collapse in biodiversity, we must act and fast.

# Library

## Saturday Opening

Opening hours 10am to 5pm  
June - October 2023

(There is no Saturday opening during August and the beginning of September.)

### June

10 June	Lincoln's Inn
17 June	Middle Temple
24 June	The Inner Temple

### July

1 July	The Inner Temple
8 July	Lincoln's Inn
15 July	Middle Temple
22 July	Gray's Inn
29 July	CLOSED

### August

CLOSED

### September

16 September	The Inner Temple
23 September	Lincoln's Inn
30 September	Middle Temple

### October

7 October	Gray's Inn
14 October	The Inner Temple
21 October	Lincoln's Inn
28 October	Middle Temple

## Loans

The Library extended the loans service when we reopened in March 2022. Broadly, there are three main loan categories. Key practitioner textbooks are available for overnight loan 30 minutes before the library closes. Books from the wider legal collections are often available as weekly loans and items from our non-law collections can usually be borrowed for three weeks. Loan requests must be made at the Enquiry Point, where further specifics are available.

## One-to-One Database Training

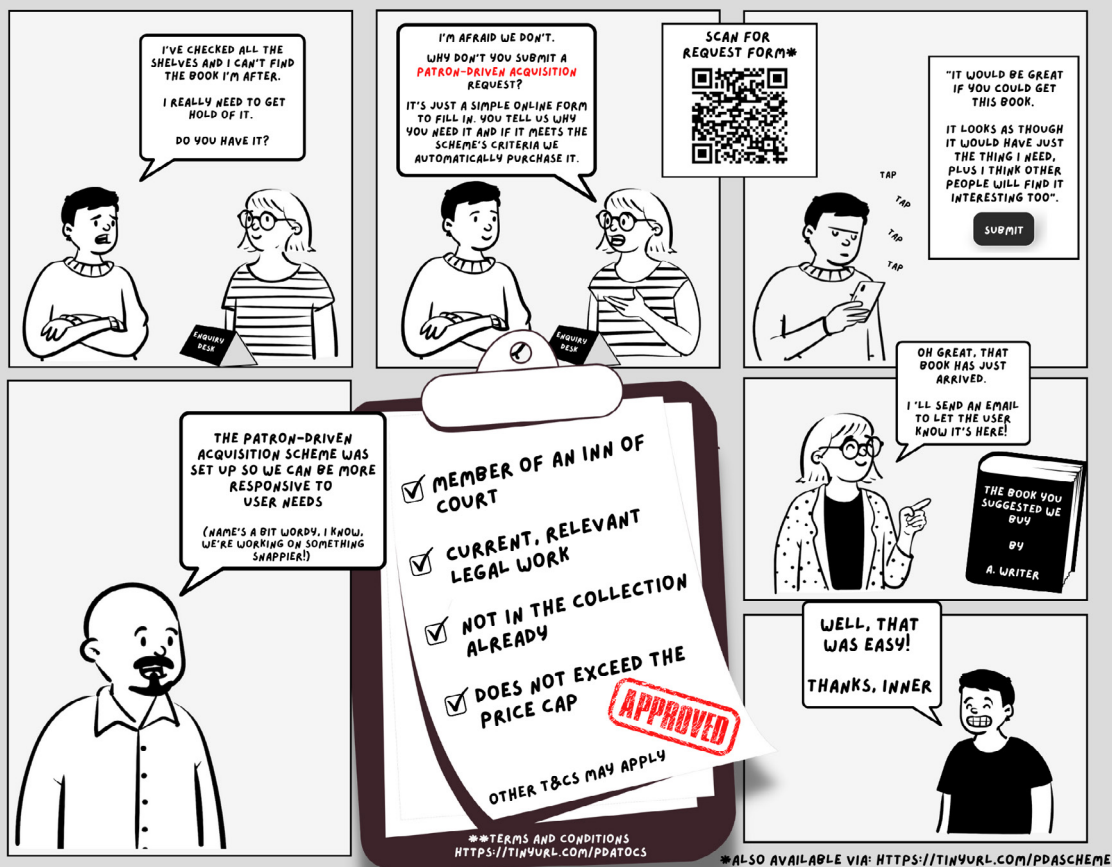
Library staff can offer short one-to-one sessions on using the subscription databases.

These sessions will look at finding cases, legislation, and commentary. We can also tailor the session to meet specific needs. We cannot undertake research at these sessions; rather, they are aimed at helping our users navigate the databases more effectively.

Please contact [trainingsessions@innertemple.org.uk](mailto:trainingsessions@innertemple.org.uk) if you are interested.

[innertemplelibrary.org.uk](http://innertemplelibrary.org.uk)

## INNER TEMPLE LIBRARY PRESENTS ... THE PATRON-DRIVEN ACQUISITION SCHEME



## Patron-Driven Acquisition Scheme

Patron-driven Acquisition (P-DA) schemes (or Demand-driven acquisition) are not new. Academic libraries have implemented, refined, and evaluated these offerings for years. Hidden behind myriad snappy names such as *Your Books!*, *More Books, You Choose*, *You be the Librarian*, *Books on Demand* etc., these schemes work differently in different institutions. Eligibility criteria, scope, and format can also differ wildly. What they all do have in common is the desire to provide more library users with the resources that they need, when they need them. Sitting alongside traditional collection management processes, the P-DA scheme is intended to enable us to respond to user and member research requirements in a timely fashion, at their point of need. In short, it formalises the ad hoc process of user recommendation and request with a fast-track 'automatic purchase' guarantee if the book meets the basic criteria of the scheme.

By piloting such a scheme in The Inner Temple Library, we hope to give our users and members a voice - a platform to help shape their library's collection. We hope it empowers users to request the titles they really need for their research as well as giving the opportunity to point out gaps in library holdings. Librarians (or book purchasing committees!) should feel no shame when collection gaps are noticed as no one can be aware of every publication by every publisher. A title that might otherwise have seemed a little too niche for the collection (will anyone ever read it?) is looked upon more favourably when requested via PD-A. There is the understanding that the requestor (at least) will make use of the book in question, making the purchase less of a risk as we are providing our user community with the material they require.

The P-DA scheme pilot at The Inner Temple Library will run until September 2023 and is targeted at printed materials only.

## Feedback on the P-DA Scheme

*"Wonderful news; I will look out for it on my next visit."*

*"That is fantastic!"*

For more information, or to make a request, see our [website](#) or scan the QR code:







# Temple Church

## TEMPLE CHURCH TRINITY TERM

### JUNE

**Wednesday 14 June, 6pm**  
**Choral Evensong in Celebration of Magna Carta and the Rule of Law**  
Special Guest Speaker: Professor David Carpenter, Kings College, London.  
*The Reception of the Magna Carta in the 13th Century* Followed by drinks in the Round Church.

**Sunday 18 June, 11.15am**  
**Choral Mattins followed by Father's Day Sunday Lunch in Middle Temple**  
Members of Inner Temple are welcome to book in for lunch, 020 7427 4800 between the hours of 10am-4pm Monday-Friday.

**Tuesday 20 June, 7pm**  
**Summer Concert: Bar Choral Society**  
Greg Morris *director*, Thomas Cousins *treble*, Jessica Gillingwater *mezzo-soprano*, Sally Pryce *harp*, Rachel Gledhill *percussion*, Matthew Jorysz *organ*.  
For more information and to book [www.templemusic.org](http://www.templemusic.org)

**Thursday 29 June – Sunday 2 July**  
**Temple Music Foundation Festival in celebration of the composer William Byrd at the 400th Anniversary of his death.**  
A series of services, lectures and concerts. Performers to include: Stille Antico, Fretwork, Mahan Esfahani, Westminster Cathedral Choir  
For more information and to book [www.templemusic.org](http://www.templemusic.org)

#### Sunday services

8.30am Holy Communion (said)  
11.15am Choral Mattins (1st and 3rd Sun),  
Choral Communion (2nd, 4th and 5th Sun)

#### Wednesdays

6pm Choral Evensong

#### Thursdays

1.15pm-1.45pm Lunchtime Holy Communion (said)

### JULY

**Sunday 2 July, 11.15am**  
**Choral Communion followed by the Temple Big Picnic** in Inner Temple Garden for members of the four Inns and their guests.  
To book for the Temple Big Picnic [innertemple.org.uk/bigpicnic](http://innertemple.org.uk/bigpicnic)

**Sunday 16 July, 11.15am**  
**Baptism, Confirmation and Choral Communion**  
President and Preacher: The Rt Revd and Rt Hon. Dame Sarah Mullally, The Bishop of London

**Tuesday 25 July, 6.30pm**  
**Temple Music Foundation Concert: Royal College of Music, Organists' Showcase**  
A rush hour concert profiling four students from the Royal College of Music.  
For more information and to book [www.templemusic.org](http://www.templemusic.org)

**Wednesday 26 July, 6pm**  
**Choral Evensong with Jazz**  
Come and join us for the last service of the Legal Year and celebrate summer with refreshments in the Round after the service.

**Thursday 27 July, 6pm**  
**Trinity Term Call Night for The Inner Temple**

## Contacts

**The Reverend Robin Griffith-Jones**  
**Master of the Temple**  
07834 521 471  
[master@templechurch.com](mailto:master@templechurch.com)

---

**The Reverend Mark Hatcher**  
**Reader of the Temple**  
[reader@templechurch.com](mailto:reader@templechurch.com)

---

**Catherine de Satgé**  
020 7353 8559  
[catherine@templechurch.com](mailto:catherine@templechurch.com)

---

**Temple Church**  
[www.templechurch.com](http://www.templechurch.com)

---

# History Society Lecture



MONDAY 26 JUNE 2023

## Treasures from the Library

Professor Sir John Baker KC LLD FBA  
Downing Professor Emeritus of the Laws of England and Inner Temple Bencher.

The Inn is the custodian of some of the most important and intriguing documents in our national and legal history. Professor Sir John Baker will explore three from the collection:

The medieval Clifford's Inn triptych, comes from the dawn of formal legal education in England. Within also lies the earliest regulations for students in any of the legal Inns.

The earliest coloured pictures of English law courts in action. They are a landmark in the history of English secular art and date from around 1450.

In 1553 the boy King Edward VI wrote 'My devise for the succession' in which he sought to change the order of succession to the throne contrary to the will of Henry VIII, excluding Mary and Elizabeth, but only resulting in the death of Lady Jane Grey.

---

## TO BOOK

[innertemple.org.uk/manuscripts](http://innertemple.org.uk/manuscripts)

### COST

In-person: £11.75

Online: Free (Non-members:  
scroll down and click 'Add Ticket')

### ENQUIRIES

[members@innertemple.org.uk](mailto:members@innertemple.org.uk)  
020 7797 8264

### WHERE

In-person and livestreamed from  
The Inner Temple, London EC4Y 7HL

### WHEN

Monday 26 June 2023  
6pm - 7pm (GMT+1)





## Enjoy exclusive hire of Pegasus Bar & Restaurant

Celebrate all your private occasions at The Pegasus. With exclusive hire available on weekends between 11am–11pm.

A stone's throw from Temple Church, The Pegasus is a convenient location for pre or post church gatherings and concerts.

Enquire today.

020 7797 8230

[venuehire@innertemple.org.uk](mailto:venuehire@innertemple.org.uk) | [innertemplevenuehire.co.uk](http://innertemplevenuehire.co.uk)

Seated:

**Up to 40 people**

Standing:

**Up to 50 people**



## Christmas events for all

Christmas, a time to celebrate with family, friends and colleagues.

Our elegant and historic surroundings offer a unique and unforgettable backdrop for all your Christmas celebrations.

From traditional Christmas lunches and dinners to cocktail receptions and festive-themed parties, we can provide everything you need to make your private event a success.

Enquire today.

020 7797 8230

[venuehire@innertemple.org.uk](mailto:venuehire@innertemple.org.uk) | [innertemplevenuehire.co.uk](http://innertemplevenuehire.co.uk)

### Special Offer

Book your Christmas event by the 31 August 2023 and receive a complimentary glass of Prosecco on arrival.

Quote ref ITXMAS23.  
T&Cs apply.

# Staff News



**JESS BROWN**  
**E&T Outreach Co-ordinator**

Jess started her role as Outreach Co-ordinator in April. She comes to us with a wealth of experience, having previously worked in numerous roles at Linking London, a partnership organisation working to widen participation and improve student success in the higher education sector.



**MATUS HANUSCIN**  
**Senior Sous Chef**

Matus joins us as Senior Sous Chef. He is a seasoned chef with over 10 years of experience in the hospitality industry, having worked in a diverse range of settings such as hotels, restaurants, private members clubs, and late night venues.



**SALVATORE GIORDANO**  
**Back of House Manager**

Salvatore joins us as Back of House Manager. He has dedicated most of his career to managing the back-of-house operations within the hospitality industry. His vast experience, spanning multiple countries, has honed his skillset. He is an expert who offers exceptional care for our customers.



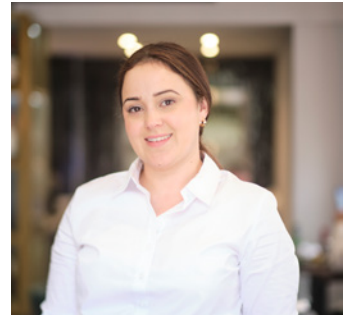
**ROBERTA DASSORI**  
**Sous Chef**

Roberta brings her extensive experience in the culinary industry to our team as a Sous Chef in our main kitchen. An accomplished chef, she has gained expertise working across various restaurants and hotels in London and has dedicated almost a decade to perfecting her skills in Mediterranean cuisine.



**GIUSEPPE CONDEMI**  
**Pastry Chef**

Giuseppe has a distinguished background working in hotels and restaurants across Germany, Italy and London. Giuseppe's professional journey as a pastry chef included formal training in Milan. He takes great pride in his exceptional baking techniques and possesses extensive knowledge of the culinary arts.



**LILIBETH FERNANDES**  
**Hospitality Assistant**

Lilibeth joins our Pegasus Bar & Restaurant team as a dedicated Hospitality Assistant, bringing over 15 years of experience in customer-facing roles from both Venezuela and London. With a strong commitment to ensuring customer satisfaction, Lilibeth takes pride in delivering exceptional service.





# Temple Music

## William Byrd Festival 29 June – 2 July

### Concert: Fretwork

Friday 30 June 1pm - 2pm

Temple Church

Stile Antico

[www.templemusic.org/concerts/fretwork](http://www.templemusic.org/concerts/fretwork)

### Talk: Mr Byrde affirms it to be truth

Friday 30 June 1.30pm - 4.30pm

Inner Temple Lecture Theatre

Kerry McCarthy

[www.templemusic.org/concerts/kerry-mccarty-talk](http://www.templemusic.org/concerts/kerry-mccarty-talk)

### Concert: William Byrd and the Tudor revival

Friday 30 June 6.30pm - 7.45pm

Temple Church

Inner Temple Lecture Theatre

Westminster Cathedral Choir

[www.templemusic.org/concerts/westminster-cathedral-choir-2023](http://www.templemusic.org/concerts/westminster-cathedral-choir-2023)

### Talk: Anne Boleyn & Elizabeth I

Thursday 29 June 4.30pm - 5.30pm

Middle Temple Hall

Tracy Borman

[www.templemusic.org/concerts/tracy-borman-talk](http://www.templemusic.org/concerts/tracy-borman-talk)

### Concert: England's Nightingale

Thursday 29 June 7.30pm - 9.15pm

Temple Church

Stile Antico

[www.templemusic.org/concerts/stile-antico-englands-nightingale](http://www.templemusic.org/concerts/stile-antico-englands-nightingale)







## Concert: Mahan Esfahani

Saturday 1 July 12 noon - 1pm  
Temple Church

Inner Temple Lecture Theatre  
Westminster Cathedral Choir  
[www.templemusic.org/concerts/mahan-esfahani](http://www.templemusic.org/concerts/mahan-esfahani)

See Temple Church page for details of Holy Communion and Evensong services during this festival.

## Concert: Anthem

Tuesday 11 July 6.30pm - 7.30pm  
Temple Church

Inner Temple Lecture Theatre  
Guildhall Saxophone Ensemble  
[www.templemusic.org/concerts/anthem](http://www.templemusic.org/concerts/anthem)

## Concert: My Heart Is Inditing

Monday 17 July 6.30pm - 7.30pm

Temple Church

Temple Church Choir and Temple Players  
with organist Charlie Andrews and director  
Tom Allery with an all-Handel gala

[www.templemusic.org/concerts/my-heart-is-inditing](http://www.templemusic.org/concerts/my-heart-is-inditing)

## Royal College of Music: Organists' Showcase

Tuesday 25 July 6.30pm - 7.30pm

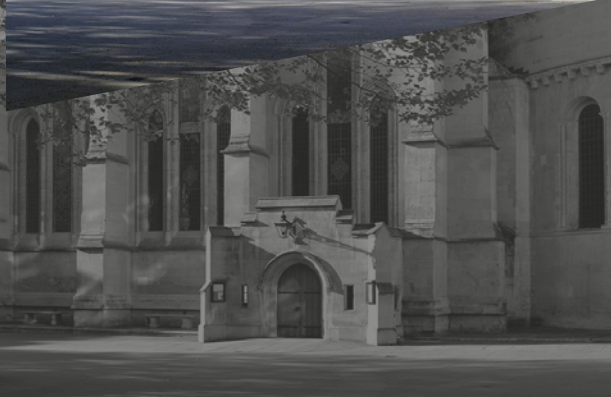
Temple Church

[www.templemusic.org/concerts/rcm-organists-showcase](http://www.templemusic.org/concerts/rcm-organists-showcase)



Concerts, talks and services  
in the tranquility of the Temple  
Celebrating one of the greatest English  
composers of all time

Please see our website for more details and  
to book tickets [www.templemusic.org](http://www.templemusic.org)





# Trinity Term Diary

## JUNE

- 6 Trinity Term Law Sittings Begin  
Executive Committee
- 7 Books Sub-Committee
- 7-8 Internship Award Interviews
- 8 Students' Advocacy Weekend Dinner
- 12 **Social Context of the Law Lecture (Hybrid)**
- 14 Library Committee
- 15 Archive Committee
- 16-17 GDL Scholarship Interviews
- 16 **North Eastern Circuit Dinner (York)**
- 18 **Middle Temple's Father's Day Sunday Lunch**
- 19 Student Engagement and Support Committee  
Circuit Qualifying Session (Online)
- 20 Estates Committee
- 21 Circuits Forum  
**Private Guest Night (Choral Evensong)**
- 22 AI and the Law
- 23-25 New Practitioners' Residential Weekend
- 24 Training Advocacy & the Vulnerable
- 26 **History Society Lecture (Hybrid)**
- 27 Inns of Court Alliance for Women Garden Party
- 28 Spotlight On: Alternative Routes to Practising at the Bar (Online)  
Dinner for Academic Fellows
- 29 **Legal Professional Ethics in an International Context**
- 30 Pegasus Trust Reception

## JULY

- 2 **Temple Big Picnic**
- 3 Bar Liaison Committee  
Advocacy Dinner
- 4 Executive Committee
- 5 Advocacy Training Committee
- 10 Scholarship Reception  
Qualifying Sessions Committee
- 12 EDI Sub-Committee
- 13 International Committee  
**Summer Party**
- 17 Drama Society Performance
- 20 **Bench Table**
- 24 Investment Sub-Committee
- 26 Pensions Scheme Trustees
- 27 **Trinity Term Call Night**
- 31 Hall Closes  
Trinity Term Law Sittings End

## SEPTEMBER

- 4 Hall Opens
- 12 Pegasus Trust Committee
- 16 Advocacy Day & Legal Research Training
- 18 Scholarships and Outreach Committee
- 19 Introductory Evening for London Students
- 27 Education & Training Committee
- 28 Circuits Forum  
**Benchers' Night**
- 29 Introductory Evening for Students from Outside of London

## KEY

**Green:** Qualifying Sessions

**Blue:** Special Events

**Bronze:** Bencher only Events

## Treasury Office

**Henrietta Amodio**  
**Director of the Treasury Office**  
020 7797 8181  
[hamodio@innertemple.org.uk](mailto:hamodio@innertemple.org.uk)

**Jude Hodgson**  
**Membership Registrar  
& Data Protection Lead**  
020 7797 8206  
[jhodgson@innertemple.org.uk](mailto:jhodgson@innertemple.org.uk)

**Kate Peters**  
**Member Events &  
Administration Manager**  
020 7797 8183  
[kpeters@innertemple.org.uk](mailto:kpeters@innertemple.org.uk)

**Nadia Ruiz**  
**Assistant to DTO**  
020 7797 8182  
[nruiz@innertemple.org.uk](mailto:nruiz@innertemple.org.uk)

**Jacqueline Fenton**  
**Membership & Records Assistant**  
020 7797 8241  
[jfenton@innertemple.org.uk](mailto:jfenton@innertemple.org.uk)

**Rosy Humphrey**  
**Member Events &  
Administration Assistant**  
020 7797 8264  
[members@innertemple.org.uk](mailto:members@innertemple.org.uk)

**Duty Porter**  
020 7797 8255  
[Porters@innertemple.org.uk](mailto:Porters@innertemple.org.uk)

**Paul Clark**  
**Technology and  
Communications Officer**  
020 7797 8229  
[pclark@innertemple.org.uk](mailto:pclark@innertemple.org.uk)

**Sandra Alvarez**  
**Communications and Social  
Media Co-ordinator**  
020 7797 8227  
[salvarez@innertemple.org.uk](mailto:salvarez@innertemple.org.uk)

**Celia Pilkington**  
**Archivist**  
020 7797 8251  
[cpilkington@innertemple.org.uk](mailto:cpilkington@innertemple.org.uk)

**General enquiries and  
parking permits**  
020 7797 8250



## SUNDAY 18 JUNE Middle Temple's Sunday Lunch for Father's Day

### TO BOOK

#### COST

Benchers £55  
Members of Hall and students £35

#### ENQUIRIES

Tickets from Middle Temple  
020 7427 4800

#### WHERE

Middle Temple  
Dress code: Business attire

#### WHEN

Doors open: 12.45pm  
Lunch: 13.10pm  
There is a service in Temple Church at 11.15am  
– all welcome (optional).



# Inn Store Now



## SILK SCARVES

£45



**IN PERSON**

Treasury Office

**ONLINE**

[innertemple.org.uk/store](http://innertemple.org.uk/store)

# Brewtiful



## KEEP CUPS

£15

**IN PERSON**

Treasury Office

Pegasus Bar and Restaurant

**ONLINE**

[innertemple.org.uk/store](http://innertemple.org.uk/store)