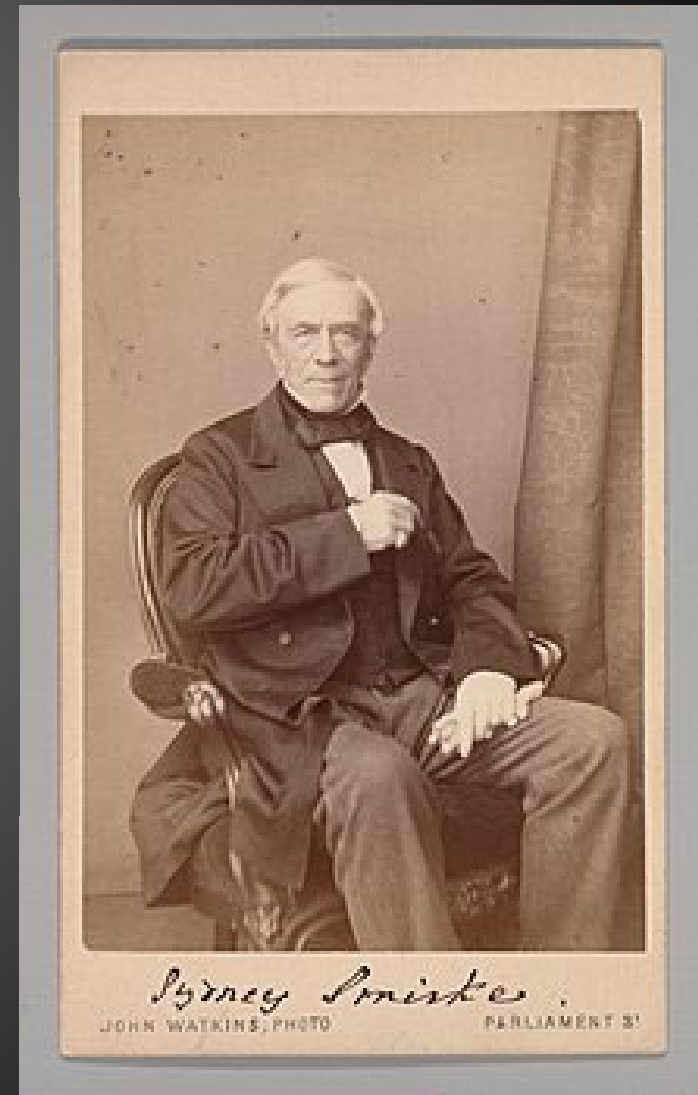


The Smirke Brothers and the Architecture of The Inner Temple Geoffrey Tyack



THE HONOURABLE SOCIETY OF
THE INNER TEMPLE





Chapel Court

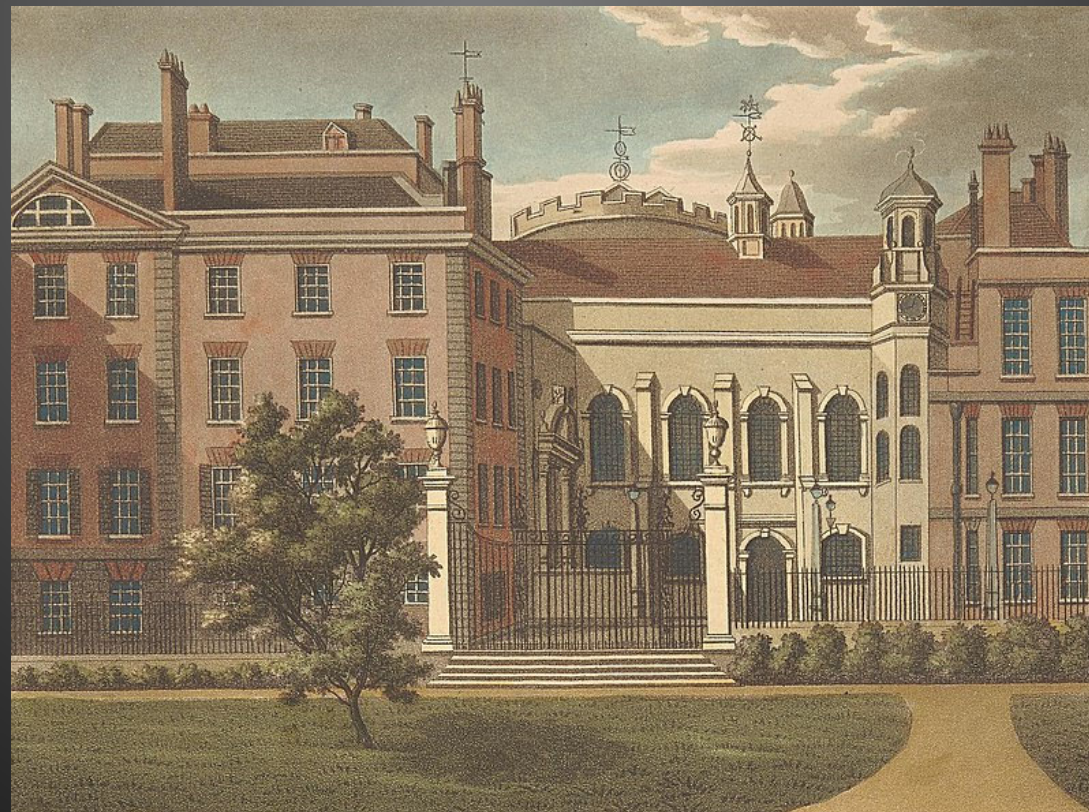
Lamb Building



The Hall after a fire on
4 January 1737 (artist:
Richard Wilson)

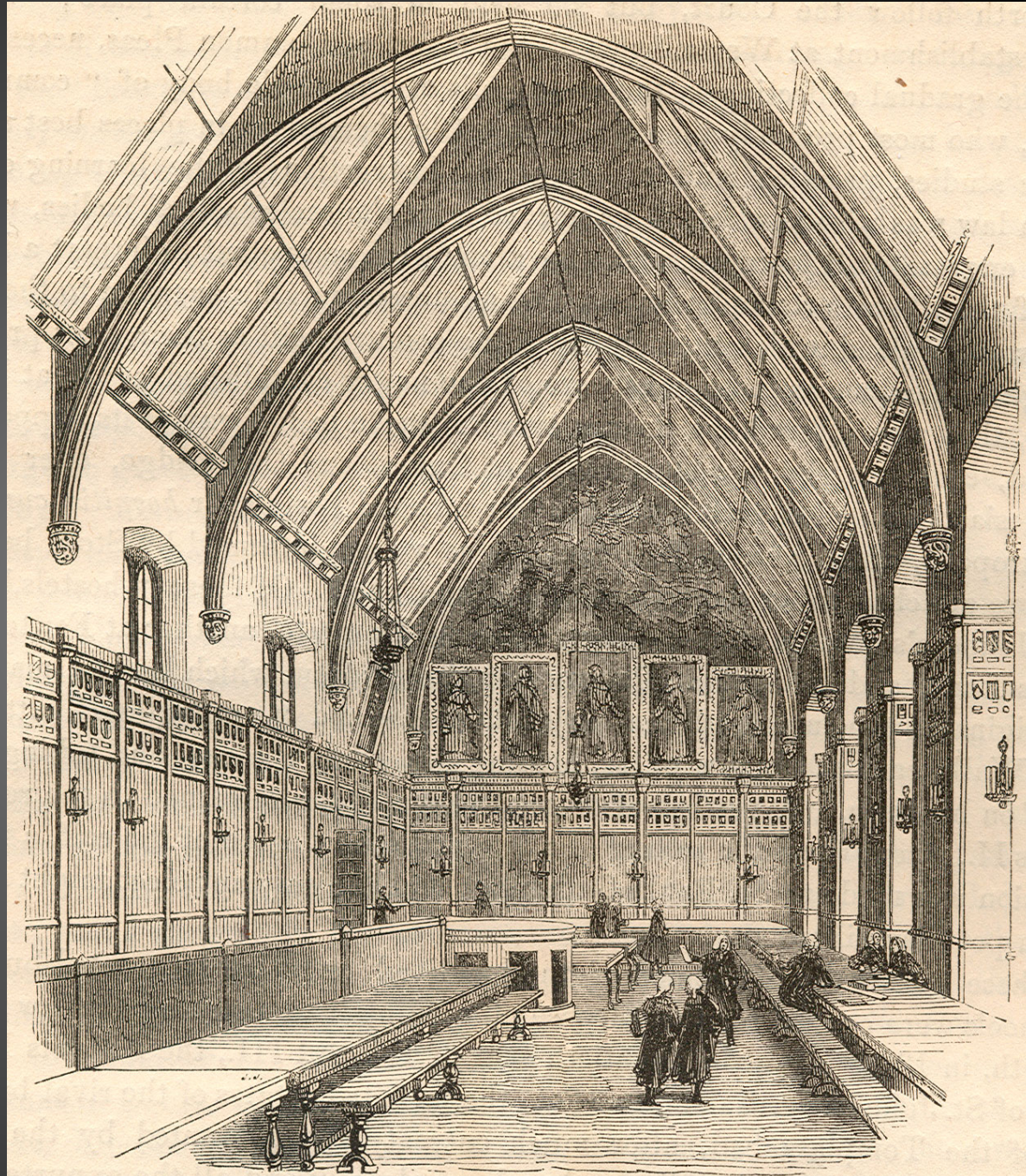


The Hall following
rebuilding: Crown
Office Row on the
left





The Hall in the early 19th century





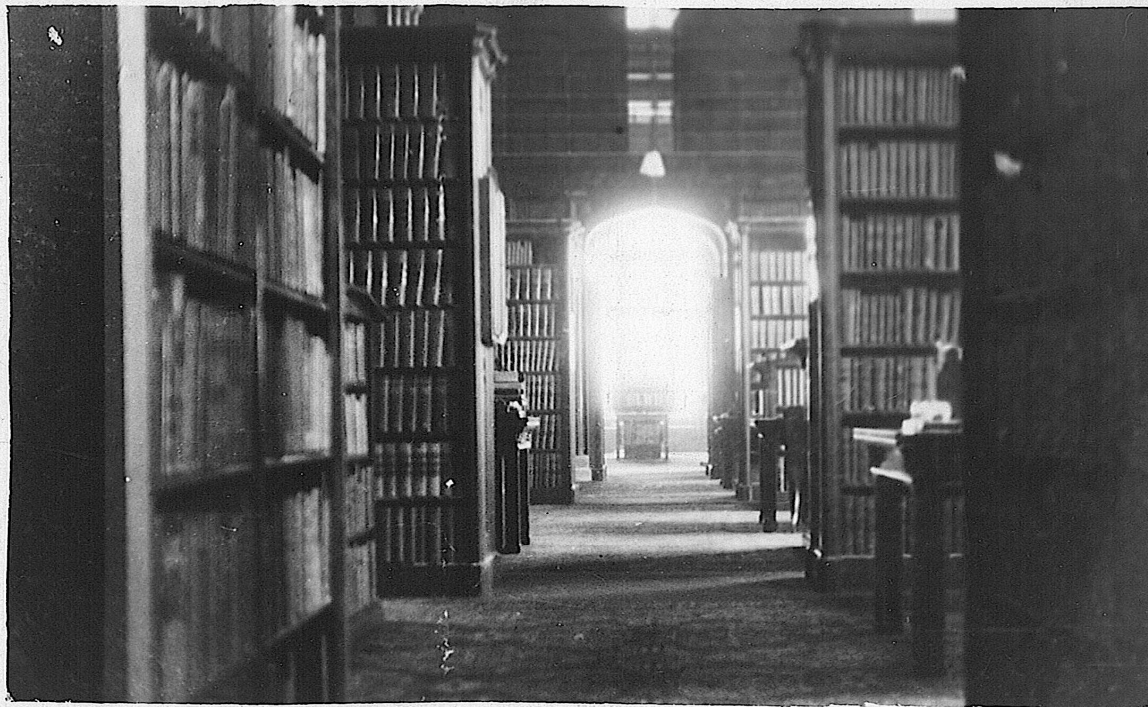
Exchequer Court and the Lower Walks looking south (18th-century painting)



Paper Buildings looking south (18th-century painting)



The Library (1819)
and Parliament
Chamber (1827-28),
by Robert Smirke
(1780-1867)





Covent Garden Theatre (1808-9), designed by Robert Smirke



The British Museum, begun 1823



Mitre Court Buildings, Inner Temple
(Robert Smirke, 1830)



Paper Buildings, rebuilt by Robert Smirke in 1838



Nos. 4-5 Paper Buildings , built in 1847-8 to the designs of Sydney Smirke (1797-1867)



Dr Johnson's
Building, rebuilt
by Sydney
Smirke in 1858

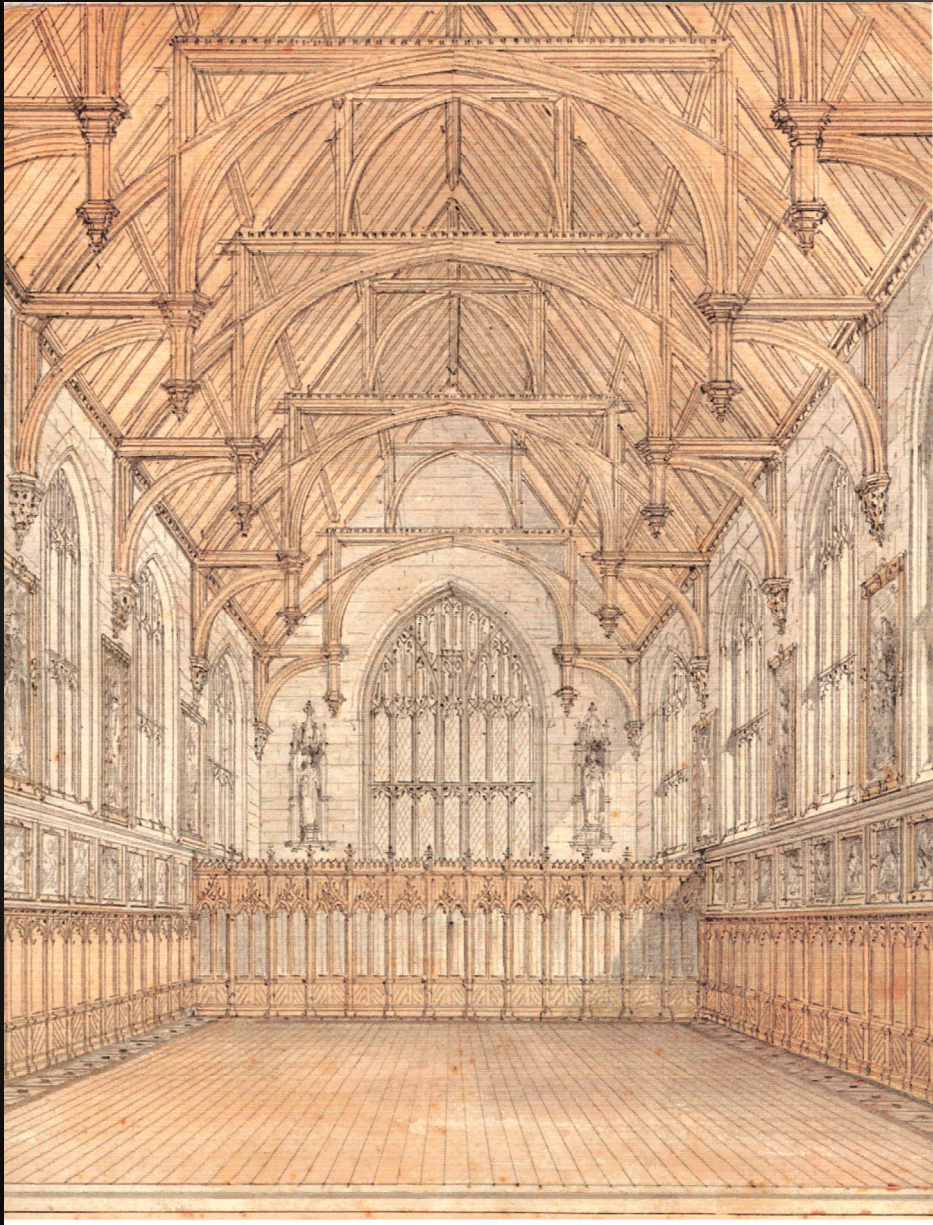


The round Reading Room of the British Museum Library, designed by Sydney Smirke and opened in 1857



Inner Temple Hall
before and after
rebuilding by
Sydney Smirke,
1867-70

The interior of Inner Temple Hall as rebuilt
by Sydney Smirke





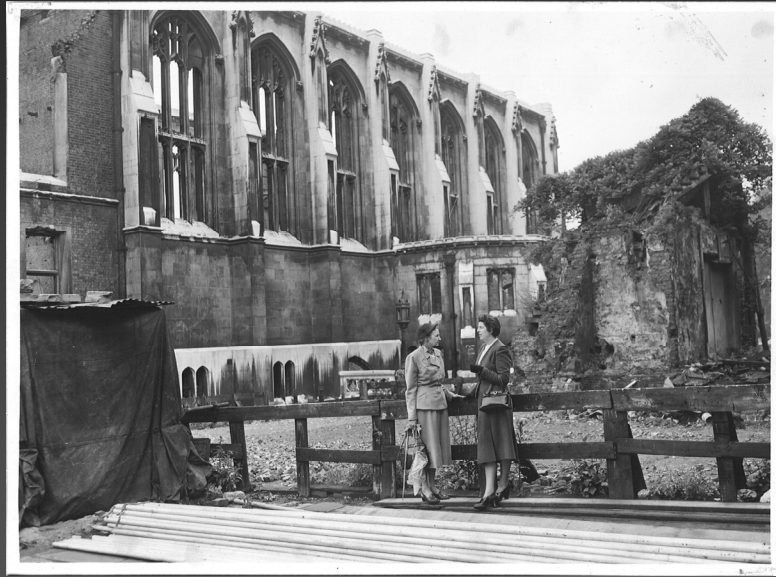
The Library after extension by by Arthur Cates in 1881



Farrar's Building (Cates, 1875-6)



2-3 Hare Court (T.G. Jackson, 1893-4)



Second World War devastation





Post-war rebuilding

THE INNER TEMPLE IN 1851

Based on a plan in the Archives

Revised to show the work of Sir Robert and Sydney Smirke between 1819 and 1870



The Inner Temple in 1851

KEY

- | | | | |
|---|---|-----|--|
| A | No. 3 North, King's Bench Walk, formerly the Alienation Office. | ITC | Inner Temple Cloisters; destroyed in 1941. |
| B | Butteries, with Hall staircase above. | K | Kitchens, with Hall entrance on east side. |
| E | The old Exchequer Office (by 1851 the Queen's Bench Office); site of the present Francis Taylor Building. | L | Lamb Building (Middle Temple); destroyed in 1941. |
| F | Farrar's Building, with passage into Hare Court. | M | The Master's House. |
| G | Gardener's Lodge, with archway into Crown Office Row. | MTC | Middle Temple Cloisters. |
| | | P | No. 4, Tanfield Court, leading to the Parliament Chamber, Sub-Treasurer's Residence and Library. |
| | | T | Twisden Building; demolished in 1866. |