



INNERVIEW

Newsletter of The Inner Temple

Trinity 2024



Congratulations to our 2024 New Silks!

From top L-R: Andrew Jones KC; Master Norman Doe; Mathew Smith KC; Sanjay Patel KC; Shail Patel KC;
Greagoir O'Ceallaigh KC; Jeffrey Jupp KC; Michael Meyer OBE KC (Hon); Dermot Keating KC;
Sharon Segal KC; Farrhat Arshad KC; the Treasurer, Joanne Brown KC; Kester Lees KC

The Guardians of Support Through Court

Guy Fetherstonhaugh KC

I am very proud to be a Guardian of Support Through Court, a charity that fundamentally exists to ensure nobody is forced to face court alone.

The increase in cuts to legal aid over recent years has meant that more people face civil or family courts alone. Their access to justice is limited by how overwhelming the legal system can be to those who have never faced it before; and many struggle to represent themselves effectively in court. There are many reasons for this, including a lack of confidence, poor mental health, and a lack of education or illiteracy.

Support Through Court (previously known as the PSU) provides a vital service to litigants in person. Their 600 plus volunteers provide emotional support and practical guidance in courts across England and Wales from thirteen offices, including a national phoneline and an online service.

Last year, Support Through Court provided more than 50,000 sessions of support to litigants in person, with 96% of clients saying that the support they received made procedures clearer and made them feel better prepared. Alongside this, 96% of clients thought they had a fairer hearing due to the support given by

volunteers; the impact being demonstrated by the charity is undeniable.

The life-changing outcomes of their clients' cases mean that despite health and financial risks, they are determined to pursue justice. This is so even for vulnerable individuals who face additional difficulties. In 2022/23, nearly 30% of Support Through Court's clients nationally had a serious health issue or disability, and a fifth did not have English as a first language.

Support Through Court's volunteers not only explain technical legal jargon but also empower clients to express their thoughts in a clear, organised way so that they can avoid being overwhelmed by the enormity of the challenges they face. Support Through Court's trained volunteers help people at any point in their case - they don't represent people, but they provide vital emotional and procedural assistance. Be it on the phone, via Zoom, or in person, their volunteers help people get legal aid, help people complete complicated legal forms and understand what is required of them, and also accompany them into their hearings. Their presence enables people to stay calm and collected – and means vulnerable people have the best chance of



SAVE THE DATE 'A Night at the Musicals'

17 JULY

Hey Guys and Dolls, put on some Hairspray, Paint Your Wagon, cover yourself in Grease, get in the Chorus Line for tickets and have a night On the Town with us.

To take part: revels@innertemple.org.uk

Guy Fetherstonhaugh KC,
Treasurer 2020/21



having the fairest hearing and accessing justice.

Support Through Court’s volunteers also work in synergy with external agencies to reduce duplication and ensure a smoother journey through the courts for litigants. When needed, their volunteers signpost clients to organisations offering free legal advice or specialised support on topics such as domestic violence, debt, and housing.

With the increasing legal advice deserts and a cost-of-living crisis, support for those having to navigate the court systems is needed now more than ever. Your support to ensure litigants in person get the assistance they so desperately need from their wonderful volunteers is vital. As a volunteer-

based service, a little goes a long way.

The Guardians Network, of which I am a Founding Member, is a growing group of like-minded philanthropic individuals and organisations who are committed to helping the most vulnerable people in our society to get fair access to justice. With over 120 individuals and organisations signed up, it is a great way to show your commitment to the work of Support Through Court and access to justice more widely.

If you’d like to learn more about the Network, please email Jacob Crossley on j.crossley@supportthroughcourt.org or visit supportthroughcourt.org to find out more about the charity.



Contents

Announcements	4
Recents Events	6
Education & Training	8
Temple Big Picnic	13
Social Context of the Law	14
In Conversation with Sarah Goom	15
Library	16
Garden	18
Temple Church	20
Temple Music	21
Staff News	22
Diary	24
London Legal Walk	25
Inner Temple Summer Party	26

INNERVIEW

Editors:
Henrietta Amodio,
Kate Peters and
Sandra Alvarez

Announcements

For our full list of appointments, please go to innertemple.org.uk/appointments

Master Andrew Henshaw (The Hon Mr Justice Henshaw) has been appointed as Judge in Charge of the Commercial Court List. The appointment runs from 1 September 2024 to 31 August 2027.

Master Thomas Teague (His Honour Judge Teague KC) retired as Chief Coroner in May.



WE'D LOVE TO SEE YOU IN BRISTOL!

Western Circuit Dinner in Bristol

Friday 14 June

7pm – 10.30pm
No.4 Clifton Village

This is a great opportunity for those with an affiliation to the Western Circuit to meet or catch up with members of the Bench, Bar, Pupils and Students.

TO BOOK

innertemple.org.uk/westerndinner

Benchers/Called Members: £49.35 each
Under 7 years' Call: £36.50
Students: £27.30
Guests: £49.35



Treasurer's Reception for Members

Wednesday 2 October

6.30pm – 8.30pm

Join us for drinks and canapés to celebrate the start of the Legal Year!

TO BOOK

innertemple.org.uk/reception

Open to: Members and their guests

Tickets: £35

THURSDAY 20 JUNE 2024

The Inner Temple and LGBTQ+ Society Dinner

Join us in celebrating our diverse LGBTQ+ barrister, judge and student members at our bi-annual dinner. Open to all Inns.

When:
7pm-10.30pm

Dress code:
Black tie or 'dress to impress'
Open to members of all Inns and their guests

For more details and to book:
innertemple.org.uk/lgbtq+dinner

Recent Events

Amity Dinner on Circuit: Northern and North Eastern in Leeds

26 April



History Society Lecture Sub-Treasurers of The Inner Temple 9 May





Midland Circuit Dinner in Birmingham

10 May

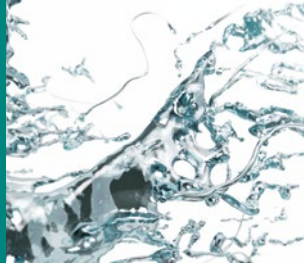


Dinner for New Silks

22 May

We were delighted to be able to welcome so many of our 2024 New Silks at this special occasion.

Education & Training



The Junior Bar Association (JBA)

The Junior Bar Association (JBA) represents Inner Temple members who are practitioners undertaking pupillage and up to 7 years' practice. They run several social and educational events throughout the year. We would like to introduce you to the 2024/5 Junior Bar Association committee:

- **President** - Nancy Kelehar of Temple Garden Chambers
- **General Secretary** - Sneha Shrestha of Holborn Chambers
- **Treasurer** - Christie O'Connell of 1 Hare Court

- **Social Media Secretary** - Tom Gilchrist of 33 Bedford Row
- **Education Secretary** - Gordana Balać of Black Antelope Law
- **Social Secretary** - Colleen Cumbers of Crown Office Chambers

The new committee hosted their first event at the end of March which explored the topic of 'Surviving on your Feet' as a Pupil starting second six or as a new tenant. Special thanks to Olivia Bennett (7BR), Jenny Wilson (36 Family), Blessing Mukosha Park (Lamb Chambers), Lucas Nacif (Farore Law) and William Sneddon (5KBW) for sitting on the panel.

The JBA have a few social events coming up over the next few months.

JBA's Summer Soirée

Friday 21 June 2024, from 6pm

Join us in the sun on the terrace at Inner Temple for an evening of alcoholic and non-alcoholic beverages (including Pimms and mocktails) accompanied by a selection of nibbles and, most importantly, wonderful company. Our Summer Soirée is the perfect way to kick off your weekend and offers you the opportunity to mingle with your fellow junior barristers after a long week.

Tickets: £12 for tenants, £10 for pupils, £20 for 2x tickets. Book: [HERE](#)

Tickets are available to book via [The Inner Temple website](#). The event is open to members of all four Inns and their guests.

JBA's Halloween Quiz

Friday 25 October 2024, from 6pm

The much-beloved Halloween Quiz returns for another year! Get a group together and see if the only thing scarier than a zombie-werewolf-vampire is your opponent's lack of general knowledge. Halloween costumes are HIGHLY encouraged. And no, 'tired barrister' does not count as a costume.

Tickets: £15 for individuals, £100 for team of 8
Book: [HERE](#)

SAVE THE DATE

JBA's Black Tie Ball

Friday 8 November 2024

Tickets coming soon.

To keep up with the JBA's events you can follow them on social media or email them directly at jba@innertemplesocieties.org

Circuit Discovery Day

On 28 February, our Outreach team piloted running a Discovery Day on Circuit. Our Discovery Day programme is delivered in partnership with the Sutton Trust, a social mobility charity, for their Pathways to Law students. Participants are all from state schools and are in Year 12 and 13.

The majority of our Discovery Days are held at The Inner Temple and involve students travelling from all over England and Wales to meet and work with our members. Travel is fully funded by the Sutton Trust but we know that many of those travelling to London for Discovery Days can have very long journeys and so we wanted to trial an event in a different location which might help reduce journey times.

With the support of the Scholarships and Outreach Committee, we proposed that we hold a Discovery Day on circuit to reach those students who could not travel to the Inn. The University of Leeds (a Pathways to Law partner university) generously offered to host the event and students from the Universities of Manchester, Liverpool, Leeds, and Leicester respective Pathways programmes attended.

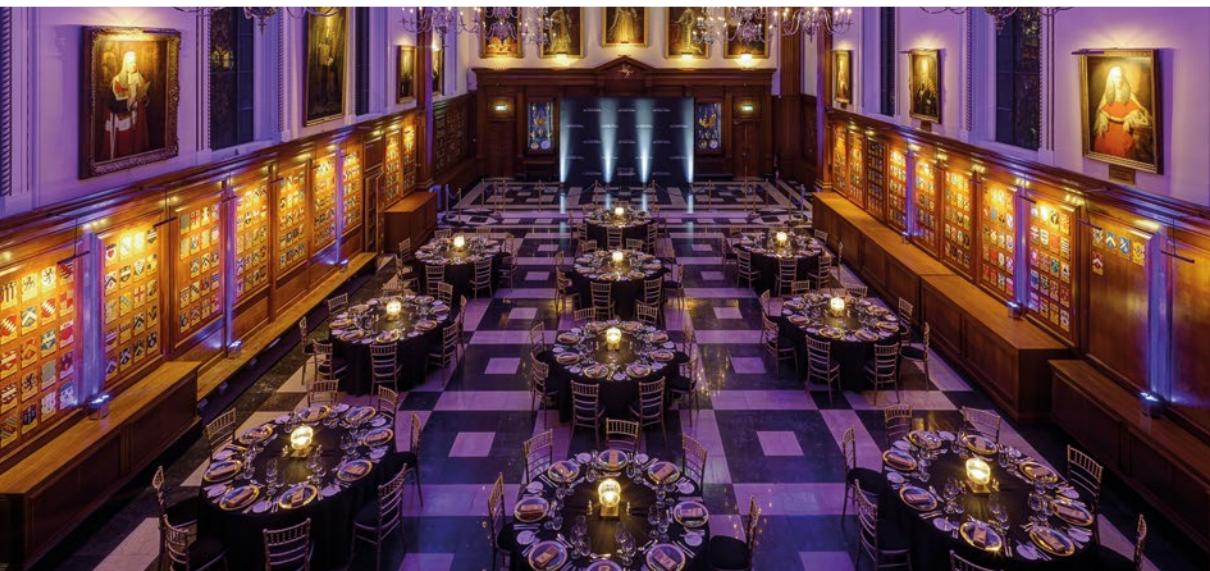
The format of the afternoon followed our usual timetable: a presentation from a

member of the Outreach team on becoming a barrister, followed by a workshop (delivered by members) on case law and pleas in mitigation, before concluding with a Q&A panel with four members.

The students in attendance really enjoyed the experience and were very grateful to the volunteers for giving up their time. Staff from the partner universities commented how it was particularly nice to have members who were based on the Northern and Northeastern Circuits to show the students that it is not a requirement to be based in London to be a successful barrister.

We are extremely grateful to our members who gave up their afternoons to attend. With thanks to Master Toby Hooper, Master Joseph O'Brien, Master Elizabeth Nicholls, Pippa Pudney, Ashleigh Metcalfe, Brett Davies, Lauren Gardner, and Reagan Persaud for volunteering their time.

If you are a practising barrister or judge and would like to get involved with our Discovery Days, please ensure you **complete the volunteering form** on the website and select 'Outreach 16-18-year-olds' so we know you are interested in supporting these events.



Celebrate Your Event in Style

The Hall, the grandest of our spaces, exudes the rich history of The Inner Temple.

This room, with its timeless charm, offers an awe-inspiring ambience suitable for a range of large occasions for up to 400 guests, including receptions, dinners, conferences, and weddings. Ensuring a memorable experience for all who grace its threshold.

Members rates are available with up to 70% off room hire.

020 7797 8230

venuehire@innertemple.org.uk

Education & Training



DRAMA SOCIETY The Temple Shakespeare Cup

The annual Temple Shakespeare Cup was hosted at The Inner Temple Hall on 21 May. The Inner Temple Drama Society performed *A Midsummer Night's Dream* directed by student member, Johnley Videña. Middle Temple performed *The Tempest* directed by Thomas Mallon and Thomas Chaberkain, which went on to win the title for a second year in a row.



The judging panel included actors, Alex MacQueen and Jane Garda, screenwriter Tom Kinninmont and film producer, Tony Bracewell. Special thanks to Master Beal for helping make the night a success. The full cast list for both performances can be found [here](#).

The Temple Shakespeare Cup will return next year, hosted by Middle Temple. More information to come soon!

Edinburgh Fringe Festival

The Inner Temple Drama Society will be returning to the Edinburgh Fringe Festival this year. *The Accused* is a story of anger, revenge, love, and secrecy. After a superstar is found dead in her dressing room, all fingers point to Daniel... but did he kill her? That's the question on everyone's lips but only the jury will decide. Join us for this interactive show which follows a murder trial. Whilst serious, you can expect a

few dance and drag appearances. We promise you will not have seen anything quite like it!

Previously, the Drama Society's Fringe productions have been sold out. This year you'll be able to see the production from 19-24 August 2024. Tickets are available to purchase on the Fringe website [here](#).

Debating Society

Congratulations to Yousif Shami for winning the Rawlinson Cup Debate Final 2024, judged by Master Treasurer, Master Frances, and Master Sutherland Williams. Nicole Wallace came close as runner up, while Richard Jones and Jesler Van Houdt also did a fantastic job, making it difficult decision for the judges. Special thanks to Master Godfrey Carey who delivered a few words about Peter Rawlinson and to all the judges who helped with the earlier rounds of the competition.

The Inner Temple will be hosting the annual Inter-Inn Debating Competition on the evening of Wednesday 26 June and Wednesday 10 July. Spectators from all four Inns are welcome. If you would be interested in observing the competition, please email activities@innertemple.org.uk



Yousif Shami (winner), Nicole Wallace (runner up), Master Treasurer, Master Frances, Master Sutherland Williams (judges)

Contacts

Outreach

Outreach
outreach@innertemple.org.uk
020 7797 8240

Scholarships

Scholarships
scholarships@innertemple.org.uk
020 7797 8211

Pegasus
pegasus@innertemple.org.uk
020 7797 8210

Professional Training

Pupils and New Practitioners
pupils-practitioners@innertemple.org.uk
020 7438 2310

Established Barristers
establishedbarristers@innertemple.org.uk
020 7797 8209

Pre-Pupillage

Pre-Pupillage
pre-pupillage@innertemple.org.uk
020 7438 2311

Call to the Bar
call@innertemple.org.uk
020 7797 8257

Qualifying Sessions
qs@innertemple.org.uk
020 7438 2311

General and Volunteering Enquiries

Education
education@innertemple.org.uk
020 7797 8208

InnStore

WATER BOTTLE

£22

In person

Treasury Office

Online

innertemple.org.uk/store



The Perfect Venue for Intimate Gatherings

Pegasus Bar & Restaurant is the perfect spot for celebrations including engagement and birthday parties, baptisms, and wedding receptions. Members receive discounted room rates.

Available for private hire on weekends, between 11am – 11pm, The Pegasus seamlessly combines indoor comfort with outdoor charm, boasting a contemporary interior and a south-facing terrace. Choose from a variety of catering options, including afternoon tea, canapés, finger food or bowl options.

020 7797 8250

venuehire@innertemple.org.uk

innertemplevenuehire.co.uk

Receptions:

Up to 50 guests

Room capacities may vary based on your required layout



Temple Big Picnic

SUNDAY 30 JUNE 2024
12.30PM – 3.30PM

Members of the Inns, their families and friends are invited to come and enjoy our garden and hospitality. Includes barbeque, music, bouncy castle, face painters and even a Treasure Adventure!

Adult: £32.05 Child (2-15yrs) £15.95

innertemple.org.uk/bigpicnic

Social Context of the Law

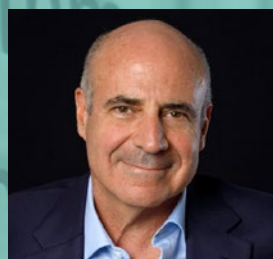
MONDAY 10 JUNE 2024

Do Magnitsky Type Sanctions Develop the Rule of Law?

Speakers

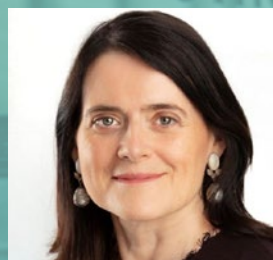
Bill Browder

CEO and co-founder of Hermitage Capital Management, Head of the Global Magnitsky Justice Campaign



Bronwen Maddox

Director and CEO of Chatham House



Moderator

Sir Geoffrey Nice KC

Gresham Professor of Law 2012-2016, co-founder Geoffrey Nice Foundation 2014 and Inner Temple Benchers

1 Qualifying Session
Equivalent to 1hr CPD

TO BOOK

innertemple.org.uk/sanctions

COST

In person £12.35
Online £7.35

ENQUIRIES

members@innertemple.org.uk
020 7797 8250

WHERE

In person and livestreamed
from The Inner Temple

WHEN

Lecture: 6pm - 7.20pm
Networking Reception: 7.20pm - 8pm



In Conversation with Sarah Goom

Tuesday 18 June
8am - 10am

Breakfast Presentation
In person and online

Sarah Goom (Director General, Commercial with Trade and International Directorate, Government Legal Department) will talk to Simon Regis CBE (Deputy Director, Government Legal Department) about her career path at the Employed and Self-Employed Bar.

TO BOOK

innertemple.org.uk/ebbbreakfast

Tickets: Free but booking is essential
Open to: All Inns

Library

Saturday Opening

Opening hours 10am to 5pm
There is no Saturday opening during August and the beginning of September.

June - October 2024

June

8 June	Lincoln's Inn
15 June	Middle Temple
22 June	Gray's Inn
29 June	The Inner Temple

July

6 July	Lincoln's Inn
13 July	Middle Temple
20 July	Gray's Inn
27 July	CLOSED

September

14 September	The Inner Temple
21 September	Lincoln's Inn
28 September	Middle Temple

October

5 October	Gray's Inn
12 October	The Inner Temple
19 October	Lincoln's Inn
26 October	Middle Temple

Introductory Evenings

Members of the Library team will be attending the Student Introductory Evenings, where they will explain why it is important to make use of the Library as a student. There will be an opportunity to ask staff questions about library services.

Qualifying Session

Library staff will be presenting an introduction to legal research on Saturday 14 September and Wednesday 16 October. Please contact the **Education & Training** Department to book a place on either date.

PASS Skills Day

The Deputy Librarian is taking part in the PASS (Pegasus Access and Support Scheme) skills day on Saturday 29 June, presenting an introduction to legal research.

innertemplelibrary.org.uk

WE'VE STARTED ADDING OPEN ACCESS ARTICLES TO OUR CURRENT AWARENESS SERVICE. SO KEEP YOUR EYES PEELED FOR SOME DEEP DIVES

SCAN AND SUBSCRIBE!

What does Covid-19 teach us about English contract law? - Legal Studies
Posted March 12th, 2024 in contracts, coronavirus, news by sally
This paper examines how English courts have responded to the contract problems generated by the Covid-19 pandemic and considers what this tells us about future contract law development. In relation to consumers, the law on pandemic-affected contracts, though limited, indicates that traditional contract doctrine does not necessarily produce beneficial outcomes for consumers. This further diminishes the importance of the common law in the consumer contracting context. In the commercial sector, contracting parties were encouraged by government and other organisations to co-operate with one another and act in good faith during the crisis, but this has not influenced the courts applying contract law in the pandemic aftermath. The emerging case law suggests that contract law has retained its commitment to certain features of formalism and self-interest.

Teaching stare decisis to first-year law students in higher education: a pedagogical blind alley? - The Law Teacher
Posted March 20th, 2024 in news by sally
The doctrine of stare decisis is often explained in first-year law studies as synonymous with the doctrine of precedent and differentiated into ratio decidendi and obiter dicta. This understanding of stare decisis is flawed.

Migrant Work, Gender and the Hostile Environment: A Human Rights Analysis - Industrial Law Journal
Posted March 20th, 2024 in news by sally
This article addresses work-related and gendered harms of the 'hostile environment', a set of measures implemented through the Immigration Acts of 2014 and 2016, which aims to make life in the UK impossible for irregular migrants. The 'hostile environment' criminalises work without legal status, facilitates data sharing between public bodies and immigration enforcement, and restricts access services and benefits. The article examines factors that can make women susceptible to irregularity and exposure to hostile environment measures, and distinctive forms of gendered harm such as workplace sexual harassment. It argues that the detrimental impacts of the hostile environment contravene international and regional human rights obligations. Barring certain migrants from access to the labour market may violate the socio-economic right to work and/or the right to private and family life, while a lack of access to legal remedy or labour inspection fuelled can violate migrants' right to decent work and...

A Library of Things

In a library context, the issue of accessibility transcends mere compliance with legal requirements or adherence to best practice—it is integral to the library's core mission of effectively meeting the information needs of its users.

Organisations such as Bringing [Dis] Ability to the Bar and Neurodiversity in Law bring into focus, through their advocacy, the imperative of embedding inclusive practices within the legal profession, and its institutions. As an Inn of Court library supporting the work of practitioners and students, it's crucial that we also embrace this approach.

In 2023 we initiated a review of the Library and its services with the aim of improving accessibility and user experience. We began with an extensive benchmarking exercise, auditing the accessibility information included on the websites of over 100 universities [1]. From this we were able to identify a broad range of inclusive equipment, software, and service adaptations.

In addition to this, we formed an inter-inn accessibility working group to discuss baselines, service parity, and what a truly accessible library would look like.

At The Inner Temple Library our first actions have included the acquisition of a range of computer peripherals and equipment for adapting study spaces, which can be borrowed for use within the library. This became our 'Library of Things'.

A Library of Things is a collection of useful objects or tools that can be borrowed by library users. These are usually displayed in a way that allows users to easily browse and select what they need. We adopted this model for a number of reasons. We wanted to remove any barriers to access, we did not want users to have to ask or request a study aid. We wanted them to be visible and easily



collected by anyone who might need or want to use them.

At the time of writing, our Library of Things contains:

- Adjustable arm rests
- Book rests
- Coloured overlays
- Disposable ear plugs
- Document holders
- Foot rests
- Headphones
- High contrast keyboard
- Large print keyboard
- Portable magnifier
- Reading lamp
- Reading ruler
- Tinted paper (lined)
- Trackball
- Trackpad
- Vertical mouse
- Wrist rests

If you would like to try any of these items we invite you to help yourself.

It's important to restate that these are only first steps. Embedding inclusive practices will be an ongoing project, but one which we are committed to.

Feedback, suggestions and comment can be sent to smclaren@innertemple.org.uk



Gardener's Cuttings

People, Plants and Opportunities

Stefano Ciabo, Trainee Gardener

I happily remember Sean's phone call following the interview offering me the trainee position, asking if I needed some time to think it over. I replied, with no hesitation, that I was truly looking forward to joining the Inn. This was the start of a two year, fascinating journey that will be coming to an end this September. I would like to share the people, plants and opportunities the traineeship has given.

People

People make places, and special people make places unique. This is true of the Inn, not only was I warmly welcomed by the Garden team and the volunteers but also introduced gradually to all the staff of the different departments. I also began to interact with members and residents, alongside a large number of fellow horticulturists from different gardens of London and nearby areas.

As part of my traineeship, I am part of the London Garden Network committee, which has been a great opportunity for networking and interaction. I have found myself surrounded by an incredible amount of expertise, stretching from planning and management to ecology and biodiversity. I feel I have been enriched professionally and would like to thank the many people that have contributed to this.

Plants

The Inner Temple Garden is a truly plant person's paradise, home for experimental planting with a strong focus on sustainable practices and wildlife friendly choices. The garden is constantly evolving, and as a result the team seeks new additions, changes and improvement. This results in projects, whether a major re-design of an area or adding exciting new plants within existing schemes.



During my first weeks in the garden, we planted thousands of *Narcissus 'Thalia'*, a delicate white daffodil, in the west border below one of the majestic *Liriodendron tulipifera*. The aim was to mirror the opposite bed facing Paper Buildings and to link the area with surrounding meadow areas, full of spring flowering bulbs. The challenge was to lay and plant the bulbs in the most naturalistic way possible, trying to achieve a 'river' meandering throughout the bed. Watching these emerge for the past two



The 'river' of *Narcissus 'Thalia'* in the West side



springs making the desired 'river' has really lifted this side of the garden.

During my second year, I was asked to share my observations and select plants to be added along the west side border to enrich the biodiversity and the botanical collection amongst the Hydrangea collection. I enjoyed researching and finding the right plant for the right place, and I was very pleased to see that Sean appreciated my selection. I'm particularly curious to see how these plants, which include the columnar evergreen tree *Eucryphia* × *nymansensis* 'Nymansay', the bee friendly *Heptacodium miconioides* and the Japanese angelica tree *Aralia elata*, will grow and develop.

Opportunities

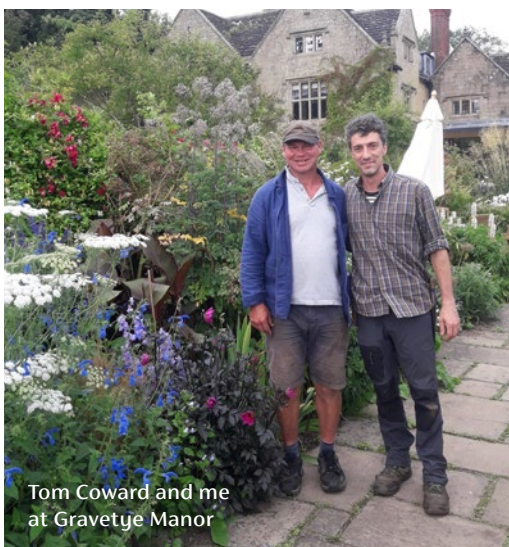
I have been fortunate over the past two years to undertake work experiences and study tours in other renowned gardens in the UK and abroad. I spent a week at Gravetye Manor in West Sussex, under the supervision of plantsman Tom Coward. I had a week of training on rose care and maintenance at Sissinghurst Castle and Gardens in Kent, which boasts an incredible collection of roses and a unique way of training them.

I joined the garden team at Beth Chatto Garden in Essex, which for decades has been at the forefront of selecting drought tolerant plants suitable for the changing British climate.

One study tour to France and Italy gave me the opportunity to research acclimatisation gardens of the 19th century in the Italian and French Riviera. In the second study tour, I've undertaken an investigation on ancient *Camellia* cultivars in Tuscany, from first introduction to subsequent distribution and conservation projects.

Kew beckons

Mixed feelings will accompany me towards the end of my two years. Leaving will certainly be emotional. Though I know I will be sad, my mind is full of joy and happy memories of my time as part of the Inn. Though, I will not go far, as I've been selected for the Diploma at Royal Botanic Gardens, Kew to work and study for the next three years. This is going to be an important step for my career, and I can honestly say that the people, plants and opportunities that the Inner Temple gave me made this achievement possible. If you are ever at Kew Gardens, please do stop and say hello.





Temple Church

TEMPLE CHURCH TRINITY TERM

We are holding a choral service every Wednesday evening in term time at 6pm (unless otherwise stated).

JUNE

Wednesday 12 June, 5.45pm

Choral Evensong to celebrate the Creation of The Temple Church Trust as a Registered Charity.

The Temple Church Trust (with Temple Church Enterprises) becomes operational this summer. The congregation is warmly invited to drinks in the Round Church after the service. Here representatives of the Trustees, from both Inns, will sign the foundational Temple Church Agreement and Temple Church Resource Sharing Agreement; and we will all raise a glass to the future of this wonderful building and its service to the Inns, London and the world of the Common Law.

Sunday 16 June, 11.15am

Choral Mattins

Prior to Father's Day Sunday lunch in Middle Temple for members of The Inner Temple and Middle Temple and their guests. To book for the lunch: Middle Temple Treasury Office, 020 7427 4800

Wednesday 26 June, 6pm

Choral Evensong

Guest Speaker: Sam Townend KC, Chair of the Bar

Sunday 30 June, 11.15am

Choral Communion

Prior to the Temple Big Picnic in Inner Temple Gardens

JULY

Sunday 21 July, 11.15am

Baptism, Confirmation and Choral Communion

President and Preacher: The Rt Hon. and Rt Revd Dame Sarah Mullally, Bishop of London

Wednesday 24 July, 6pm

Choral Evensong with Jazz

To celebrate the end of the Legal Year and the beginning of the summer break.

Sunday 28 July, 11.15am

Communion Service

Last service of the Legal Year (said)

OCTOBER

Wednesday 2 October, 6pm

Choral Evensong

First Choral Evensong of the Legal Year.

Sunday 6 October, 11.15am

Choral Mattins

First Sunday service of the Legal Year.

Wednesday 9 October, 6pm

Choral Evensong for Prisons' Week

Guest speaker: The Venerable James Ridge, Chaplain General of HM Prison Service.

Contacts

The Reverend Robin Griffith-Jones

Master of the Temple

07834 521 471

master@templechurch.com

The Reverend Mark Hatcher

Reader of the Temple

reader@templechurch.com

Catherine de Satgé

020 7353 8559

catherine@templechurch.com

Temple Church

www.templechurch.com



Temple Music

Temple Music Foundation Events

Mon 10 Jun | 7.30pm - 8.40pm
£50 | Inner Temple Parliament Chamber

Opera Rara: Salon concert

In London for her Royal Opera House debut, mezzo-soprano **Katia Ledoux** joins pianist **Anna Tilbrook** for a song recital which recreates the experience of a 19th century Parisian musical soirée.

templemusic.org/concerts/ledoux

Mon 24 Jun | 7.30pm - 8.15pm
£15 | Temple Church

Temple Soloists: Beethoven Opus 132

Four elite chamber musicians gather in 12th century Temple Church to perform Beethoven's great String Quartet No 15 in A Minor, Op 132. Temple Soloists continue their journey through Beethoven's late string quartets.

templemusic.org/concerts/beethoven-opus-132

Sat 6 Jul | 12 noon - 1pm
Free | Temple Church

Saturday Brunch: Organ recital

For the first of this year's international organ proms on Temple Church's magnificent instrument, we welcome the distinguished Norwegian musician, **Magna Draagen**, organist of St Michael's Church, Hamburg.

templemusic.org/concerts/magne-draagen

Tue 16 Jul | 7.30pm - 9pm
£10 - £30 | Temple Church

Come Ye Sons of Art

Temple Church Choir's summer concert is the culmination of a successful year for the world famous choir under its new Director, Thomas Allery. It opens with Purcell's glorious Royal ode and ends with the Vivaldi Gloria, with interval drinks in Church Court.

templemusic.org/concerts/come-ye

Thu 18 Jul | 6.15pm - 8.15pm
Free | Fountain Court

Madrigals in Fountain Court

To celebrate the end of term, Temple Singers perform a delightful selection of madrigals outside in Middle Temple's Fountain Court champagne bar. An enchanting way to begin a summer's evening in the City.

templemusic.org/concerts/madrigals

Please see our website for more details and to book tickets: **templemusic.org**



Staff News



KAROLINA LAIGONAITE

Karolina joined the Inn as a Library Evening Assistant in April. Karolina also works as a gardener and previously volunteered at The Feminist Library in South London. We look forward to working with her.



IMOGEN HAMBRIDGE

Imogen joins us as part-time Gardener having previously gardened at Lincoln's Inn, where she also completed the RHS Level 2 certificate at Capel Manor College. She has lots of experience working in public and private gardens and a keen interest in sustainable and ecological gardening.



POLLY STEEL

Polly joins us as our Floor Manager, handling Hall Lunch and managing meetings and events. With a solid background in retail, hospitality, and as British Airways cabin crew, she brings valuable customer service know-how to the team.

Bar Guest Night

Friday 11 October

Join us for a champagne and canapés followed by three course dinner and entertainment.

Book a table of 10 guests for the price of 9 guests (Group of 10 tickets).

TO BOOK

innertemple.org.uk/bgn

Open to: Called Members/Benchers and their guests
Tickets: £110 each



Staff News

SUMAN AHMED

Welcome to Suman, who joins us with a background in both front and back of house operations in quick service restaurants and food delivery. His experience in food production and service is a fantastic addition to the team as a Kitchen Porter.

SIBEL OSEI

Join us in welcoming Sibel to the Pegasus Bar & Restaurant team! Sibel comes to us as a Hospitality Assistant, bringing a wealth of experience from the renowned Dishoom restaurant group, where she was a food runner.

PEDRO REVEZ LOPES

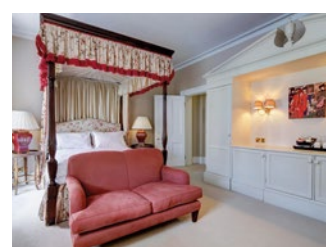
Pedro joins Pegasus Bar & Restaurant as Sous Chef, blending his diverse culinary background from restaurants, hotels, and the private sector. His passion for delighting guests through food and commitment to exceptional customer service, make him a valuable addition to the team.

Long Service

Many congratulations to members of staff who have completed significant periods of employment at the Inn.

20 YEARS

Kate Peters, Member Events & Administration Manager



Rooms at the Inn

The Inner Temple offers two double bedrooms with recently refurbished ensuite bathrooms, just a stone's throw from Fleet Street.

They are the ideal base for members attending an event at the Inn, a nearby wedding, or court hearing. The Boswell Room, finished in a contemporary style, boasts views overlooking the iconic Temple Church. Meanwhile, the Chaucer Room features a four-poster bed, with views of Hare Court.

To book, use the online booking portal via the members area on the website innertemple.org.uk or call 020 7797 8230 for more information.

2024 rates
£200

per room per night

Trinity Term Diary

JUNE

- 3 Bar Liaison Committee
- 4 Trinity Term Law Sittings Begin
Executive Committee
- 5-6 Internship Award Interviews
- 9 London Open Garden Squares
- 10 Library Committee
Social Context of the Law (Hybrid)
- 12 **Private Guest Night (Choral Evensong)**
- 13 Train the Trainers Advanced Case Analysis (Master Ann Ainslie-Wallace)
- 14-16 New Practitioners' Residential Weekend
- 15 GDL Scholarship Interviews
- 16 **Middle Temple Sunday Lunch (Father's Day)**
- 17 Student Engagement and Support Committee
Circuit Qualifying Sessions
- 18 **In Conversation with Sarah Goom**
London Legal Walk
Estates Committee
EDI Online Series: Tackling Harassment
- 19 Archives Committee
Circuits Forum
International Judicial Lecture Series (Hybrid)
- 20 **LGBTQ+ Celebratory Dinner**
- 24 **Inns of Court Alliance for Women Garden Party**
- 25 Training Advocacy & The Vulnerable
- 26 Inter-Inn Debating Competition
- 27 Advocacy Training Committee
- 29 PASS Skills Day
- 30 **Temple Big Picnic**

JULY

- 1 Pegasus Trust Reception
- 4 Advocacy Training Committee
- 8 Bar Liaison Committee
Qualifying Sessions Committee
Scholarships Reception
- 9 Executive Committee
Scholarship and Outreach Committee
- 10 Inter-Inn Debating Competition
- 11 **Summer Party**
- 15 Advocacy Dinner

- 16 EDI Sub-Committee
International Judicial Lecture
- 17 Pensions Scheme Trustees
A Night at the Musicals
- 18 **Bench Table**
- 22 Investment Sub-Committee
- 24 International Committee
- 25 Trinity Term Call Night
- 28 Last Service of the Legal Year (Said)
- 31 Trinity Term Law Sittings End
Hall Closes

SEPTEMBER

- 2 Hall Opens
- 14 Advocacy Day & Legal Research Training
- 15 Inner Temple Garden Open House Festival
- 16 Scholarships and Outreach Committee
- 21-22 Advocacy Teacher Training Weekend
- 24 **Introductory Evening for London Students**
- 25 Education & Training Committee
- 26 Circuits Forum
- 27 **Introductory Evening for Students from Outside of London**
- 28 **Foundational Skills Course**
- 30 Bar Liaison Committee
Books Sub-Committee

OCTOBER

- 1 Michaelmas Term Law Sittings Begin
Executive Committee
Pupils' Advocacy Introductory Evening
- 2 First Choral Evensong of the Legal Year
Treasurer's Reception for Members
- 3 **Bench Table**
- 6 Choral Mattins First Service of the Legal Year

KEY

Green: Qualifying Sessions
Blue: Special Events
Bronze: Bencher only Events

Treasury Office

Henrietta Amodio
Director of the Treasury Office
020 7797 8181
hamodio@innertemple.org.uk

Jude Hodgson
**Membership Registrar
& Data Protection Lead**
020 7797 8206
jhodgson@innertemple.org.uk

Kate Peters
**Member Events &
Administration Manager**
020 7797 8183
members@innertemple.org.uk

Paul Clark
**Technology and
Communications Officer**
020 7797 8229
pclark@innertemple.org.uk

Nadia Ruiz
Assistant to DTO
020 7797 8182
nruiz@innertemple.org.uk

Jacqueline Fenton
Membership & Records Assistant
020 7797 8241
jfenton@innertemple.org.uk

Rosy Humphrey
**Member Events &
Administration Assistant**
020 7797 8264
members@innertemple.org.uk

Sandra Alvarez
**Communications and Social
Media Co-ordinator**
020 7797 8227
salvarez@innertemple.org.uk

Duty Porter
020 7797 8255
porters@innertemple.org.uk

**General enquiries and
parking permits**
020 7797 8250



Join us on Tuesday 18th June

Celebrating 20 years of stepping up for justice!

REGISTRATION IS OPEN

Join The Inner Temple Team to raise money for the London Legal Support Trust

This is the 12th consecutive year that The Inner Temple Team will join the London Legal Walk to raise money for the London Legal Support Trust. Friends and family are welcome to join The Inner Temple Team on Tuesday 18 June. The more the merrier!

Donations made to The Inner Temple Team will go directly to the London Legal Support Trust and can be made via our **[donations page](#)**

To sign up to the team contact **Nadia Ruiz**





THURSDAY 11 JULY 2024, 6.30PM – 10PM

THE INNER TEMPLE MIDSUMMER MAGIC SUMMER PARTY

Delicious food, plentiful drinks
and even some dancing!

BOOK:

innertemple.org.uk/summerparty

ENQUIRIES:

members@innertemple.org.uk

020 7797 8250